

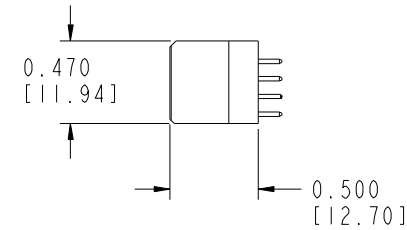
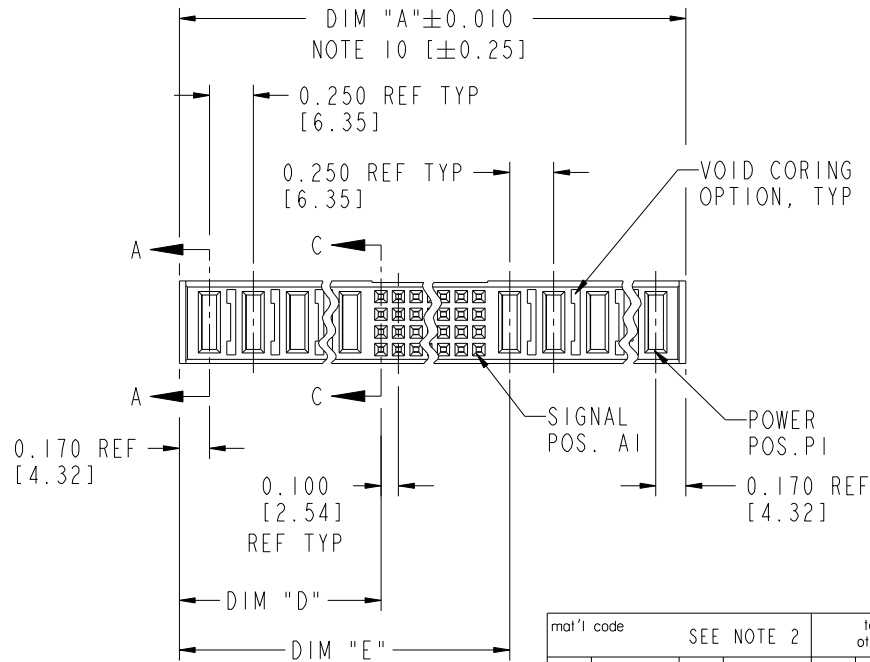
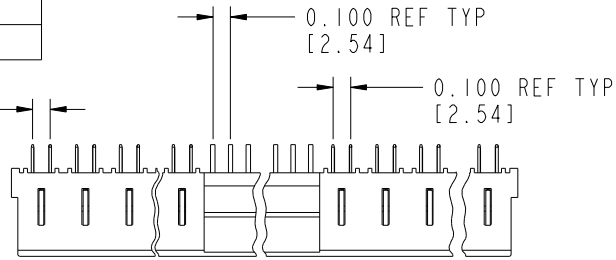
Tous droits strictement reserves. Reproduction ou communication a des tiers interdite sous quelque forme que ce soit sans autorisation écrite du propriétaire. Propriete de c FCI. Droits de reproduction FCI.



All rights strictly reserved. Reproduction or issue to third parties in any form whatever is not permitted without written authority from the proprietor. Property of FCI. Copyright FCI.

PRODUCT NUMBER
51744-ABBCCDDDE0_--
Note: ①
SEE NOTE 1

0.100 REF TYP
[2.54]



mat'l code				SEE NOTE 2		tolerances unless otherwise specified		CUSTOMER		FCI	
ltr	ecn no.	dr	date	linear	.XX±.01/0.X±0.3	COPY		www.fciconnect.com		title	
H	DG05-0124	SJ	06/02/05		.XXX±.005/0.XX±0.13	projection		VERTICAL RECEPTACLE W/O GUIDE PIN		POWER / SIGNAL / POWER	
J	DG08-0239	JC	09/11/08	angles	.XXX±.0020/.XX±.051	INCH/MM		product family		PWRBLADE	code
				dr	0° ± 2°	scale		size		dwg no	213
				enr	D. EATON 05-25-99	1:1		A		51744	sheet
				chr	J. BROWN 05-24-99						1 of 3
				appd	J. BROWN 05-26-99						
sheet index	revision sheet	J	J	J							
		1	2	3							

cage code 22526

Pro/E

Tous droits strictement réservés. Reproduction ou communication à des tiers interdite sous quelque forme que ce soit sans autorisation écrite du propriétaire. Propriété de c FCI. Droits de reproduction FCI.

All rights strictly reserved. Reproduction or issue to third parties in any form whatever is not permitted without written authority from the proprietor. Property of FCI. Copyright FCI.

PRODUCT NUMBER
51744-ABBCCDDE0_
Note: ①
SEE NOTE 1

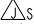
DIM	LENGTH FORMULAS (SEE NOTE 10)
DIM "A"	.250 [6.35] x DD + .100 [2.54] x (CCC/4) + .250 [6.35] x BB + .090 [2.29]
DIM "D"	.250 [6.35] x DD + .095 [2.41]
DIM "E"	.250 [6.35] x DD + .100 [2.54] x (CCC/4) + .170 [4.32]
DIM "F"	.250 [6.35] x DD + .100 [2.54] x (CCC/4) + .250 [6.35] x BB + .120 [3.05]
DIM "G"	.250 [6.35] x DD - .025 [0.64]
DIM "H"	.250 [6.35] x DD + .100 [2.54] x (CCC/4)


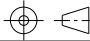
CONNECTOR NOTES

- PRODUCT NUMBER CODE:

51744 - A BB CCC DD E 0 LF

NO THIS SUFFIX: 100u"/2.54um SnPb ON PCB INTERFACE
 ADD THIS SUFFIX: 78u"/2.00um Sn ON PCB INTERFACE
 ALWAYS '0' (ZERO) (NOTE 8))
 TAIL OPTIONS (NOTE 7)
 NUMBER OF LEFT END POWER CONTACTS (NOTE 6)
 NUMBER OF SIGNAL CONTACTS (NOTE 5)
 NUMBER OF RIGHT POWER CONTACTS (NOTE 4)
 PLATING (NOTE 3)
 BASE NUMBER
- HOUSING MATERIAL: GLASS FILLED V-O HIGH TEMP THERMO PLASTIC.
 SIGNAL CONTACT MATERIAL: COPPER ALLOY
 POWER CONTACT MATERIAL: COPPER ALLOY
- PLATING OPTION:
 1 = SEE PRINT 10064183 FOR PLATING SPEC OF 51744-IBBCCDDE0; 51744-IBBCCDDE0LF
- RIGHT END POWER CONTACT, 01 TO 19 AVAILABLE.
 MAXIMUM OF 20 POWER CONTACTS PER CONNECTOR.
- SIGNAL CONTACTS, 004 TO 148 AVAILABLE.
- LEFT END POWER CONTACTS, 01 TO 19 AVAILABLE.
 MAXIMUM OF 20 POWER CONTACTS PER CONNECTOR.
- TAIL OPTIONS:
 A = .135±.010 [3.43±.25] SOLDER TO BOARD
 C = .135±.010 [3.43±.25] PRESS FIT

- BOARD RETENTION NOT AVAILABLE WITH GUIDELESS ENDS.
 - MANUFACTURE'S NAME, P/N, AND DATE CODE TO APPEAR ON THIS SURFACE.
 - THE MAXIMUM OVERALL LENGTH (DIM A) OF A PART IS 8.00 [203.2].
 - PRODUCT SPECIFICATION GS-12-149.
 - REFERENCE 51698 FOR SPECIALS WORKSHEET.
- PCB NOTES:
- ALL DIMENSIONS ARE BASIC UNLESS OTHERWISE SPECIFIED.
 - ALL THROUGH HOLES ARE LOCATED WITH A TRUE POSITION OF .004 [0.01]
 - ALL HOLE DIAMETERS ARE FINISHED HOLE SIZE.
 - 0.0453±.001 [1.151±.02] DRILLED HOLES PLATED WITH 0.0003 [0.007] MIN SnPb OVER 0.001 [1.03] TO .003 [0.08] PLATING TO ACHIEVE A .040 ±.003 [1.02 ±.08] HOLE.
 - A  SYMBOL WILL BE NEXT TO ANY DIMENSION, VIEW, OR NOTE WHICH HAS BEEN MODIFIED WITH THE CURRENT DRAWING REVISION.

mat'l code		SEE NOTE 2		tolerances unless otherwise specified		CUSTOMER				www.fciconnect.com	
ltr	ecn no.	dr	date	linear	.XX±.01/0.X±0.3	COPY		projection		title	
J				angles	.XXX±.005/0.XX±0.13	INCH/MM				VERTICAL RECEPTACLE W/O GUIDE PIN POWER / SIGNAL / POWER	
				dr	.XXX±.0020/.XXX±.051	scale		product family		code	
				enr	0°±2°	1:1		PWRBLADE		213	
				chr	D. EATON 05-25-99	A		size		sheet	
				appd	J. BROWN 05-24-99			dwg no		2	
					J. BROWN 05-26-99			51744			
sheet index	revision sheet										

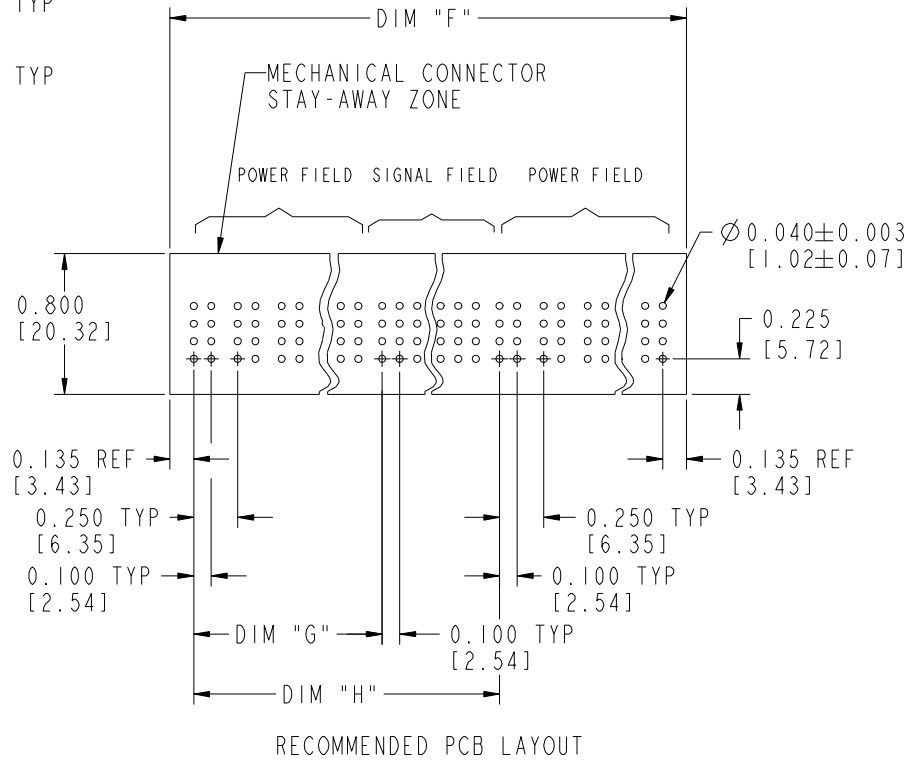
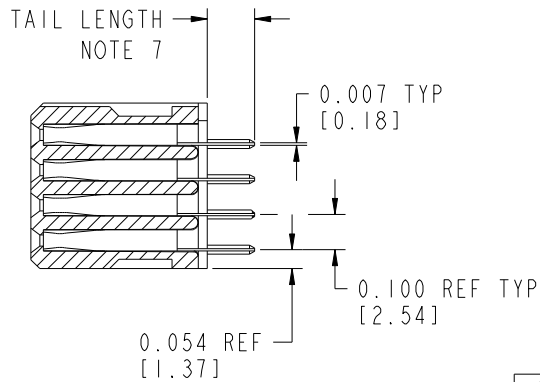
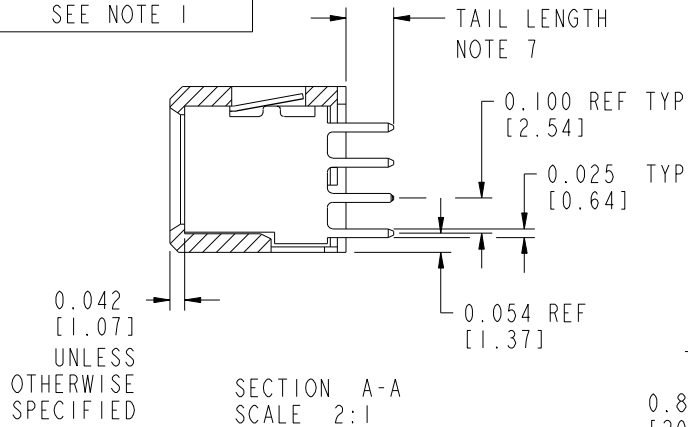
cage code 22526

Tous droits strictement réservés. Reproduction ou communication à des tiers interdite sous quelque forme que ce soit sans autorisation écrite du propriétaire. Propriété de c.FCI. Droits de reproduction FCI.



All rights strictly reserved. Reproduction or issue to third parties in any form whatever is not permitted without written authority from the proprietor. Property of FCI. Copyright FCI.

PRODUCT NUMBER
51744-ABBCCCDDE0__
Note: ①
SEE NOTE 1



mat'l code		SEE NOTE 2		tolerances unless otherwise specified		CUSTOMER		 www.fciconnect.com	
ltr	ecn no.	dr	date	linear	.XX±.01/0.X±0.3	COPY		title	
J					.XXX±.005/0.XX±0.13	projection		VERTICAL RECEPTACLE W/O GUIDE PIN POWER / SIGNAL / POWER	
				angles	.XXX±.0020/.XX±.051	 INCH/MM		product family	
				dr	0°±2°	scale		PWRBLADE	
				enr	D. EATON 05-25-99	1:1		code	
				chr	J. BROWN 05-24-99	A		size	
				appd	J. BROWN 05-26-99	51744		dwg no	
sheet index	revision sheet							213	
								sheet	
								3	
								3	

cage code 22526

Pro/E